

# Unlocking the potential for railfreight within the Construction sector

Chris Swan  
Head of Rail – UK & Europe

Wednesday 19th April

# A global leader in building materials solutions

2023

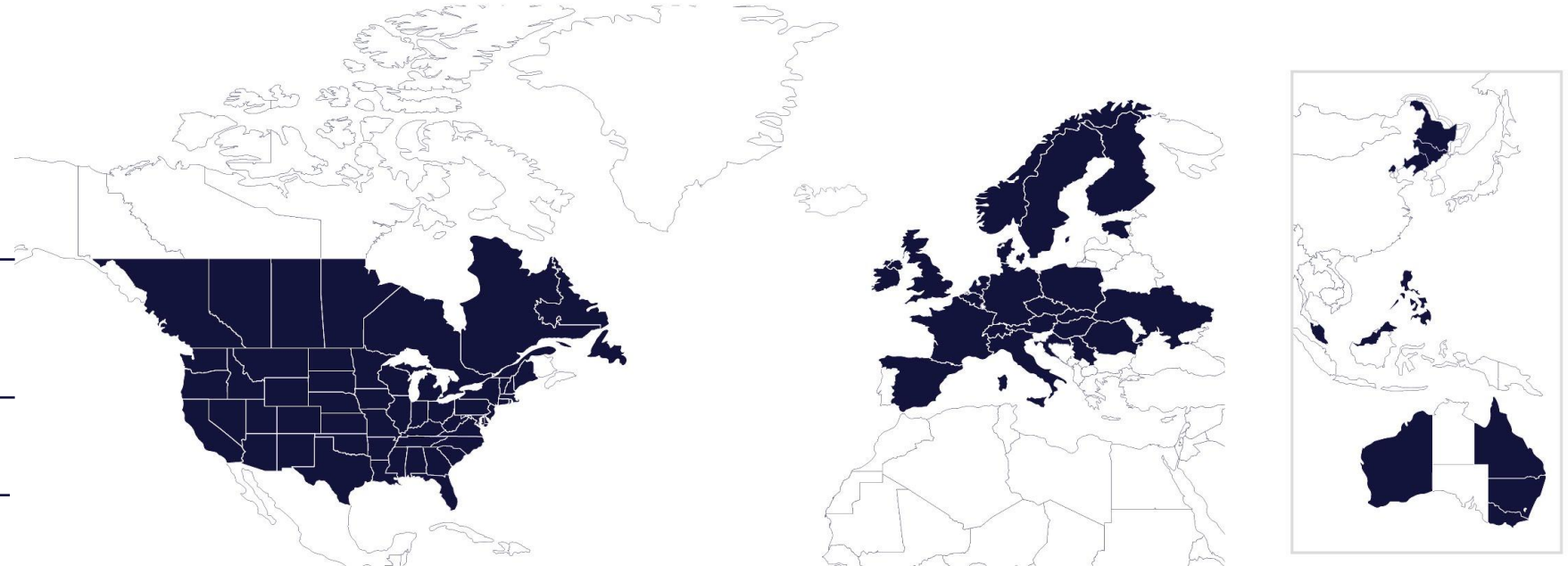
#1 Building materials  
in North America

#1 Building materials  
in Europe

Fortune 500 Company

FTSE 100 & EuroStoxx 50  
Indices

DJSI Europe & CDP  
ESG ratings



\$32.7bn\*  
Sales in 2022

c.75,800  
People

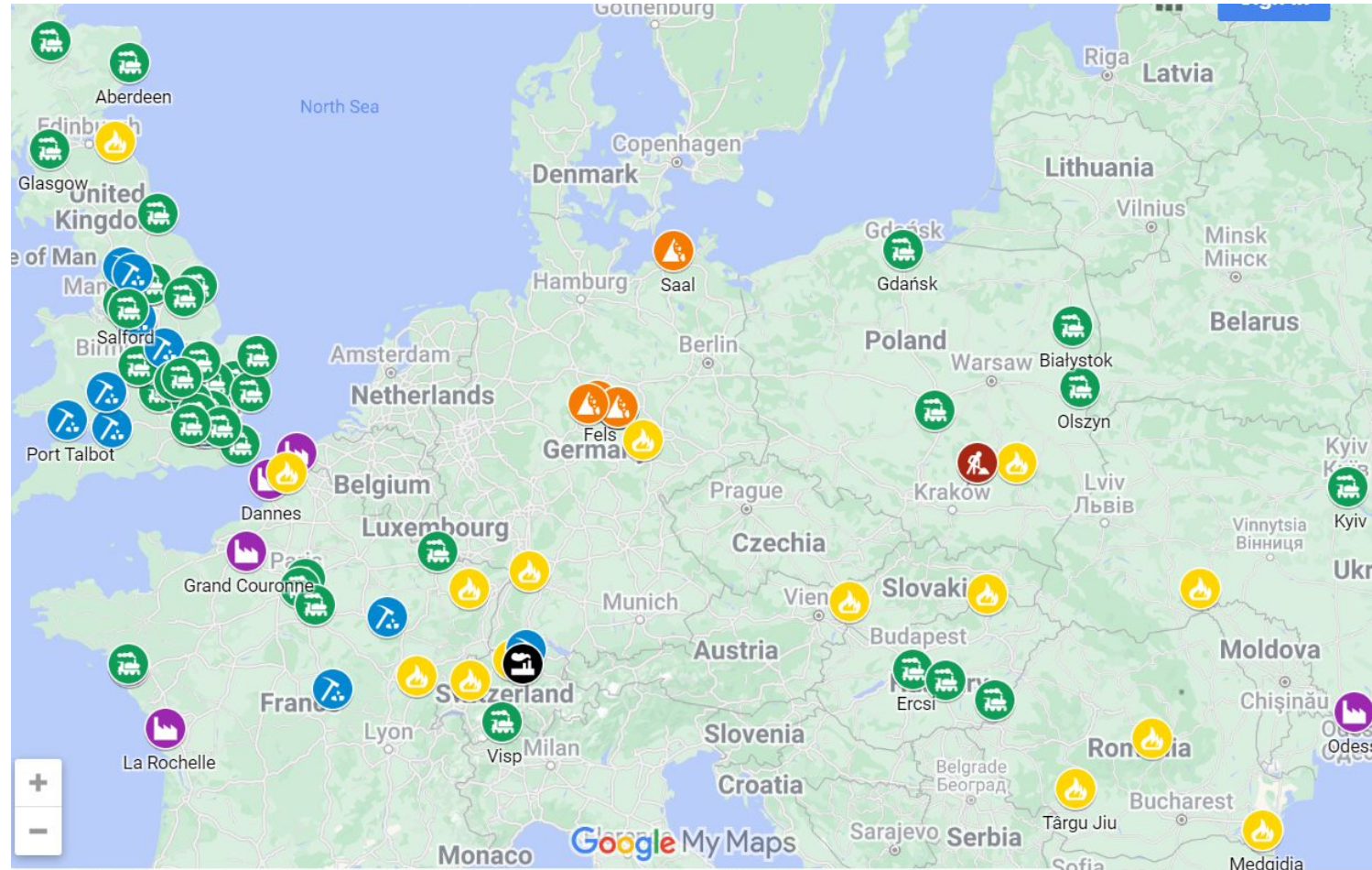
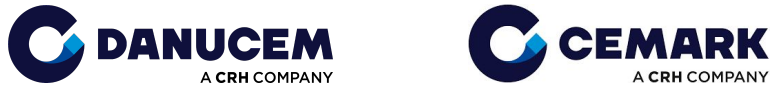
29  
Countries

\*2022 trading information is presented on a continuing operations basis, excluding the results of the Building Envelope business which was divested in April 2022 and has been classified within discontinued operations.

CRH

# CRH move Rail in across 9 Operating Companies in 10 countries

## Our Rail



# Materials moved by CRH Companies in Europe

Currently only 10-15% of Bulk materials is moved by rail

Modal Shift to Rail



## Annualised Sales Volumes<sup>3</sup>



**Aggregates**  
110m tonnes



**Cement**  
37m tonnes



**RMX Concrete**  
16m m<sup>3</sup>



**Asphalt**  
10m tonnes



**Lime**  
4m tonnes



**Concrete Products**  
8m tonnes

# Leading the Way in CO<sub>2</sub> Reduction

Raising our ambition & Accelerating efforts with new carbon reduction target of 30% in absolute CO<sub>2</sub> emissions by 2030

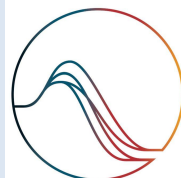
Targets Validated by SBTi to be inline with the updated 1.5°C framework

Bottom-up roadmaps in place across all our businesses with dedicated teams in place.



**-30%**

reduction in carbon emissions by 2030 (vs. 2021 levels)

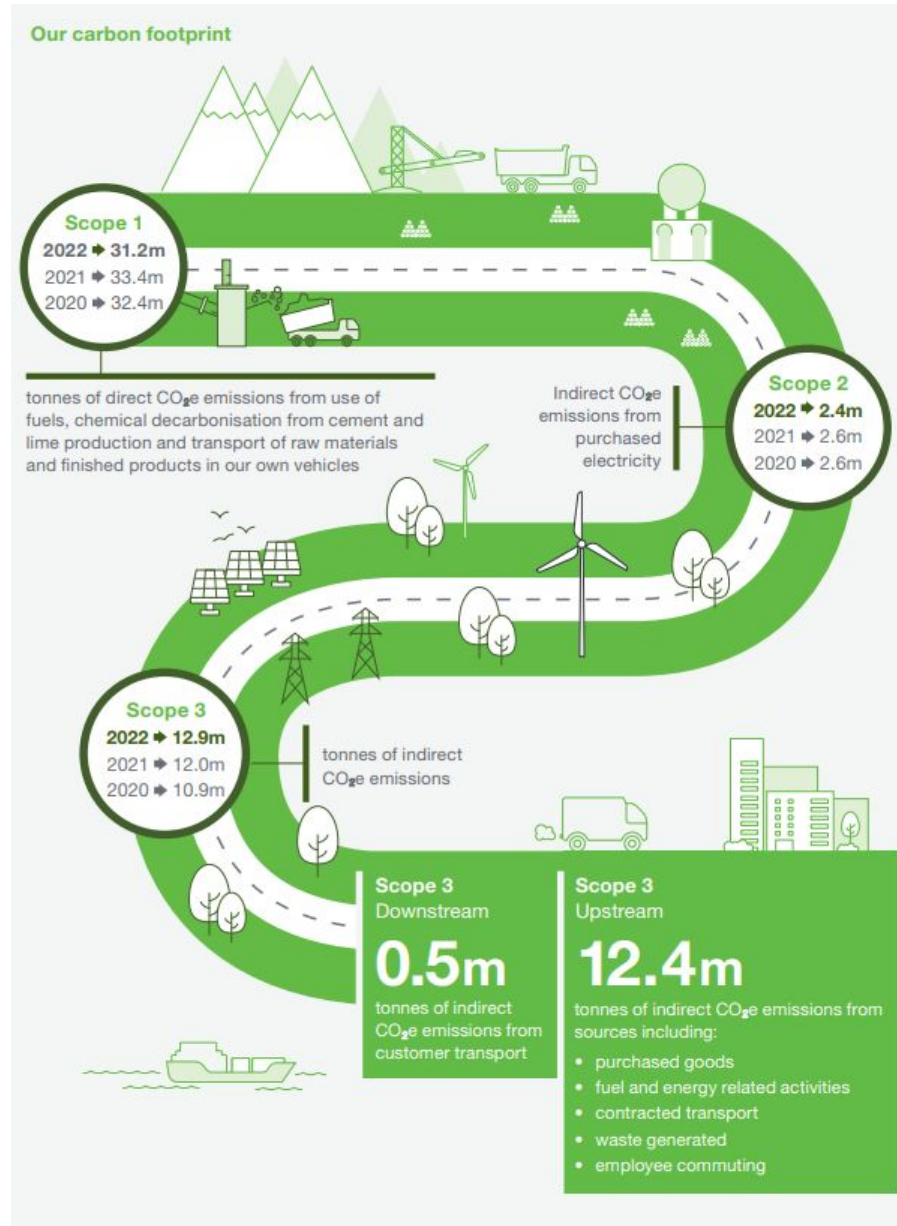


SCIENCE  
BASED  
TARGETS

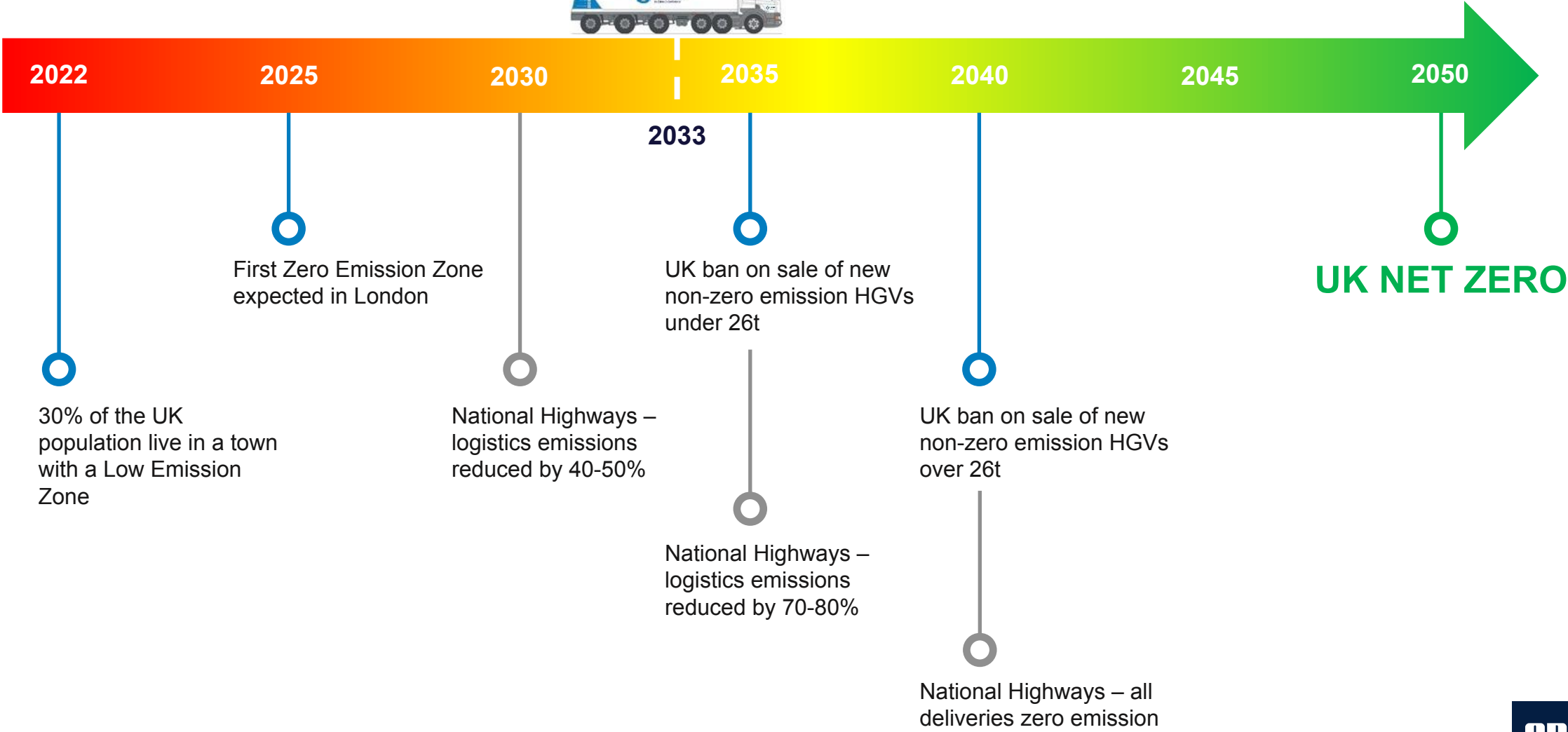
DRIVING AMBITIOUS CORPORATE CLIMATE ACTION

CRH

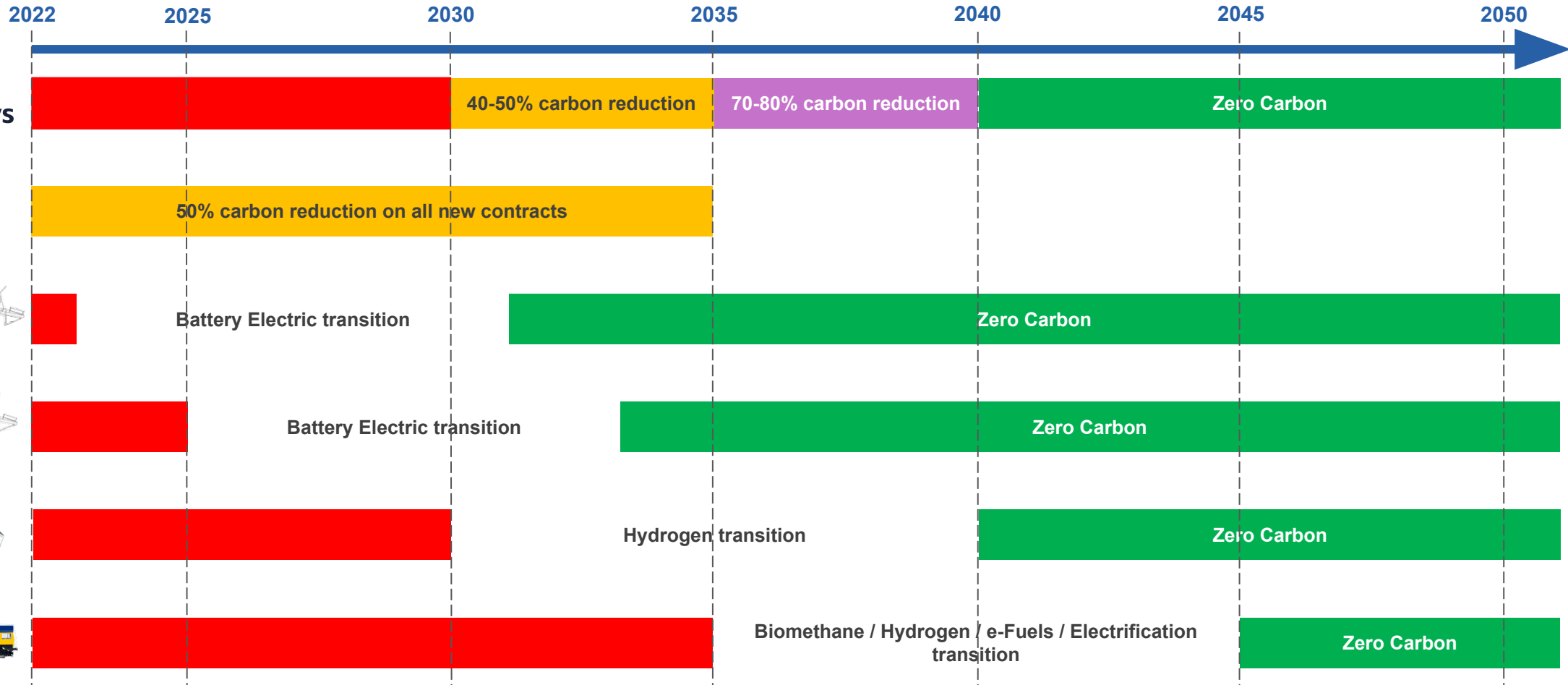
# CRH 30% total reduction target CO<sub>2</sub>



# Legislation & Key Drivers



# NET ZERO Logistics Road Map



**HS2**





# CRH Rail Plan

## Optimisation and Operations

- A Digitally connected rail operation
- Greater process automation
- Attract Next Gen talent
- Improved Rail Operations;
- Faster loading and discharge
  - More loaded trains per trainset
  - Faster trains
  - Bigger trains
- Share Rail Best Practice across European businesses.

## Modal Shift

- Service Excellence as standard
- Best in class Locos and Wagons
- Intermodal and Modular solutions
- New Terminals
- Urban Centres
- Connect facilities directly to the mainline.

## Strategic Suppliers

- Partners to have clear roadmaps to Net Zero including ambitious transitional arrangements
- Establish key partnerships with rail businesses that can provide
- Quality Service
- Innovative and disruptive ideas
- Fast & Flexible options
- New products.



**cement**



scosa **Thank You** iura cement