

RAILFREIGHT SUMMIT POLAND

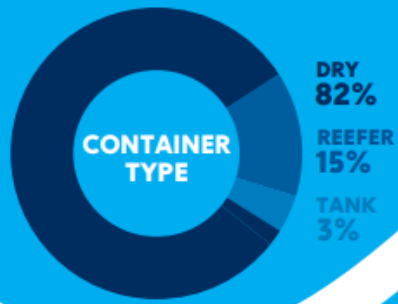
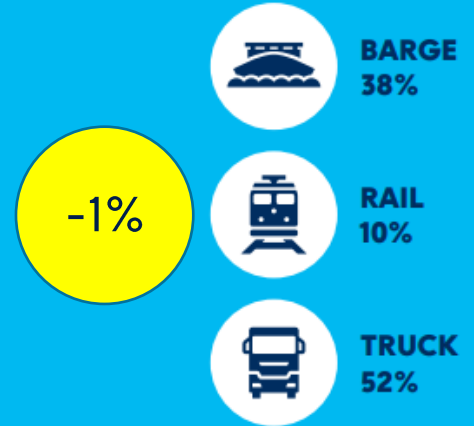


Gilbert Bal | Port of Rotterdam
Poznan | 02-09-2021

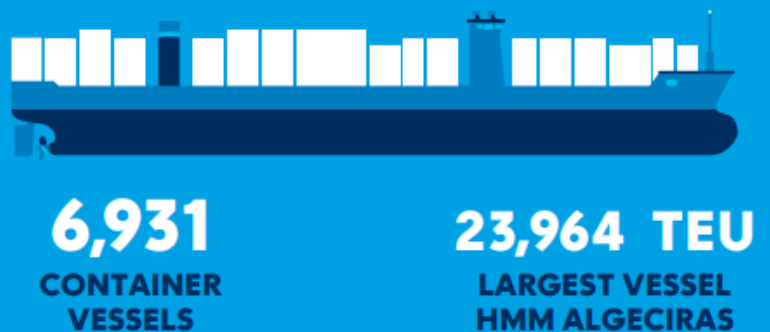
PORT OF ROTTERDAM

CONTAINER FACTS & FIGURES 2020

CONTAINER THROUGHPUT



HIGHEST NUMBER OF DEEPSEA SERVICES (HLH RANGE) ON ASIA, SOUTH AFRICA & SOUTH AMERICA TRADES



GATEWAY TO EUROPE & GLOBAL CARGO HUB



29,475
SEA-GOING
VESSELS
PER YEAR



120,000
INLAND
VESSELS
PER YEAR

10% increase!



34,278
FREIGHT
TRAINS
PER YEAR

EXCELLENT RAIL CONNECTIONS



Port of Rotterdam

More than 400 weekly connections between the port of Rotterdam with the rest of Europe

More than 35 Rail Operator active in the Port of Rotterdam.

OVERVIEW RAIL PORT, CONTAINER & RORO



- 9 Container and RORO terminals
- 33 x 700m plus rail tracks
- 11 x 350m plus rail tracks
- 17 rail gantry cranes

VEGAPLATFORMS AVAILABLE IN THE PORT OF ROTTERDAM



- Any non cranable trailer
- Regulations EU will soon come into affect (pushed by greendeal) which demands lorries to be in country of origin for a specific period of time.



ROTTERDAM <=> POLAND

40+ direct and indirect trains a week:

PCC Intermodal S.A // 10x

Duisport Agency, Distrail // 10x

P&O Ferrymasters // 9x

GVT Group of Logistics // 5x

HUPAC // 3x

Lineas // 3x

Kombiverkehr // 3x

Partner in Rail // 3x



ROTTERDAM <=> POLAND **NEW!**

Direct Railconnection Rotterdam (NL) – Rzepin(PL) vv



NEW SERVICE AS FROM SEPTEMBER 2021 !!!

Starting point in Rotterdam
C.Ro Ports Terminal

- › In 14 hours from Netherlands to Poland or vv
- › CLDN terminal time 7:00-12:00
- › CLDN terminal days Monday/Wednesday/Friday
- › Rzepin terminal time 7:00 -12:00
- › Rzepin terminal days Tuesday/Thursday/Saturday
- › Equipment 20FT, 23FT, 30 FT, 40FT, 45FT
Liftable and **NON** Liftable (Mega-)Trailers !

EXTRA SERVICES

- › Trucking in Poland if required
- › Parking in Poland (secured)
- › **Direct Shortsea Service to the UK, Ireland & Portugal**



NEW! RAIL OPERATOR **NEW!** CORRIDOR

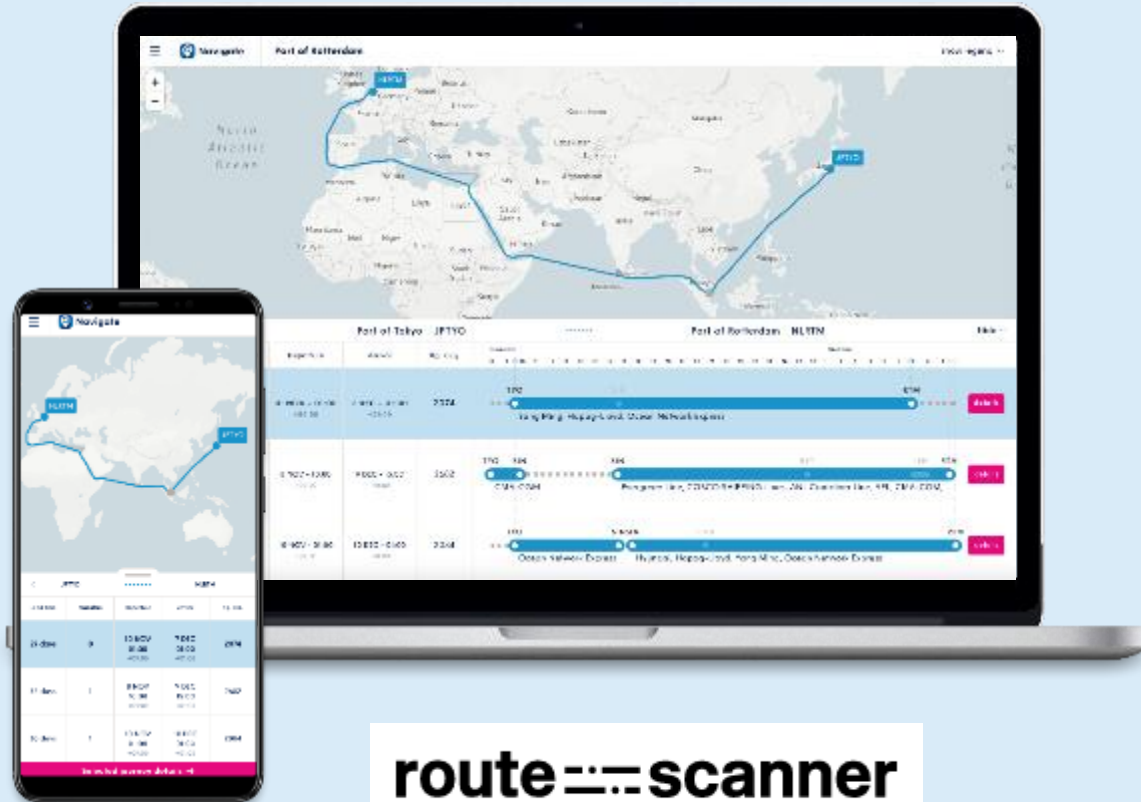
14 HOURS: RTM<=>RZEPIN ALL CONTAINER TYPES (NON) LIFTABLE TRAILERS



Partner
in Rail

Elnaz Rodriguez Medina Tak
+31 (0)10 760 40 58
elnaz@partner-in-rail.com

OPTIMISING THE LOGISTIC CHAIN: NAVIGATE - A NEW STANDARD FOR CARGO PLANING




The platform that guides (SME) shippers & forwarders through their planning processes, by providing the most comprehensive neutral door-to-door comparison available today to, from and via the port of Rotterdam

<https://rotterdam.navigate-connections.com/voyages>

CONSUMERS ARE WILLING TO PAY MORE

A.P. Moller - Maersk
639.827 volgers
26 m · 🌐

@Bloomberg and Maersk collaboration on the 2020 trend: Consumer - Consumption reimagined
A new age of increased accountability will challenge companies across industry. Social and environmental considerations have become critical drivers of decision-making, with 66% of consumers across 60 countries saying they will pay more for climate-friendly products. Maersk is exploring new ways to innovate and help global trade be more accountable and accessible for all. #maersk #globaltrade #alltheway
Read more here: <https://bddy.me/2tabGsh>
Vertaling weergeven



Home Mijn netwerk Plaatsen Meldingen Vacatures

BLOOMBERG AND MAERSK SURVEY:
"SOCIAL AND ENVIRONMENTAL
CONSIDERATIONS HAVE BECOME DRIVERS
OF DECISION-MAKING,
**WITH 66% OF CONSUMERS
ACROSS 60 COUNTRIES SAYING
THEY WILL PAY MORE FOR
CLIMATE FRIENDLY PRODUCTS"**

YES!



Jeg har taget toget
for klimaets skyld

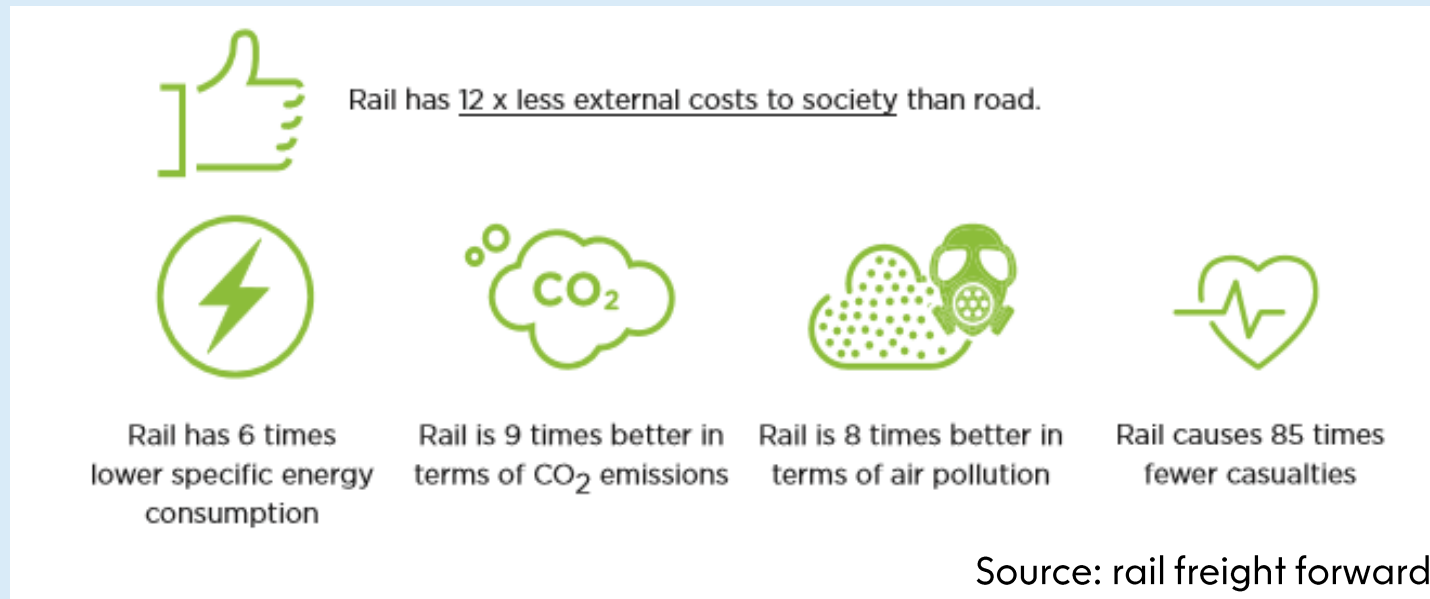


coop



MAKE USE OF THE ADVANTAGES OF USING RAIL

- Make use of the environmental benefits of rail freight
- Sell a 'win-win' situation together with your client to the end client (consumer)
- Focus on the advantages of using rail freight instead of costs
- Push Greendeal in EUROPE, use it to your advantage



NEAR FUTURE

“lets market rail better (together)”

to be:

“Consumer”

“Shipper”

“Freight forwarder”

“Rail Operator”



Marketing driven > income high



“that will be 5 euro surcharge for CO2 neutral transported goods”

“No Problem”



THANK YOU