



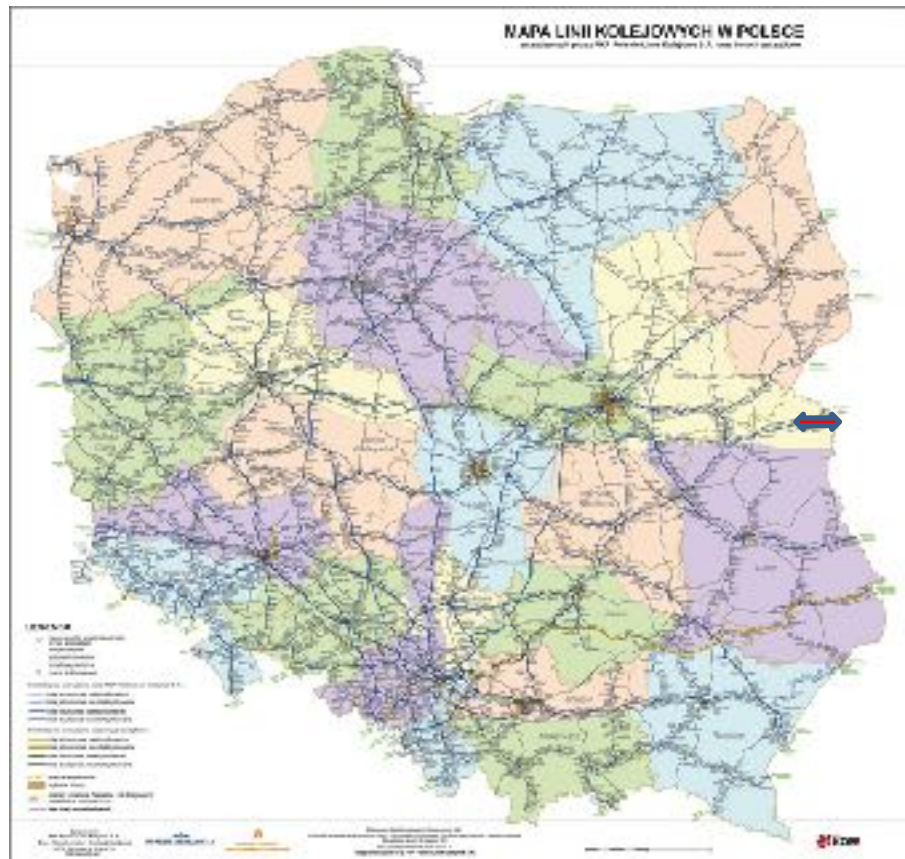
MINISTERSTWO
INFRASTRUKTURY

Increasing the capacity of the Terespol -Brest railway border crossing

Rail Freight Summit 2019, 16-05-2019, Gdańsk



The total scope of the enterprise



The current state

Infrastructure of PKP PLK

- 6 tracks 1435mm – border check in passenger traffic
- 2 tracks 1520mm - border check in freight traffic
- 2 single-track bridges - gauntlet tracks
- Single-gauge broad-gauge connection through Ik 060 with Kobylany station (CARGOTOR)
- Double-track standard-gauge connection via Ik 002 with Małaszewicze station (PKP PLK)

CARGOTOR infrastructure

- Kobylany station - 19 tracks 1520mm

Infrastructure of the National Revenue Administration (customs)

- Single-head train scanner including 3 railways

Current infrastructure capacity in freight traffic 14 pairs of trains / day
Average capacity utilization of 12 pairs of trains / day

The elements of the enterprise

Construction of group of 9 tracks of Terespol Szerokotorowy station 2018 - 2023 / 130 m PLN

Modernization of: Terespol, Małaszewicze and Biała Podlaska stations. 2017 - 2020 / 560 m PLN

Construction of new Małaszewicze West station 2019 - 2023 / 300 m PLN

**BIAŁA
PODLASKA**

2: 172,863

Porosiuki

2: 168,070

Ogrodniki

2: 180,806

Perkowice

2: 183,604

CHOTYLÓW

2: 188,896

906: -0,148

Dobryńka

2: 194,714

Małaszewicze PO

2: 201,575

Kobylany

2: 204,024

KOBYLANY

60: 205,248

TERESPOL

2: 209,280

60: 209,280

446: 209,914

453: 209,991

MAŁASZEWICZE

867: 201,575

MAŁASZEWICZE PLD

2: 199,920

Construction of group of 10 tracks Biała Podlaska Towarowa 2018 - 2020 / 60 m PLN

Extension of Kobylany station 2019 - 2023 / 250 m PLN

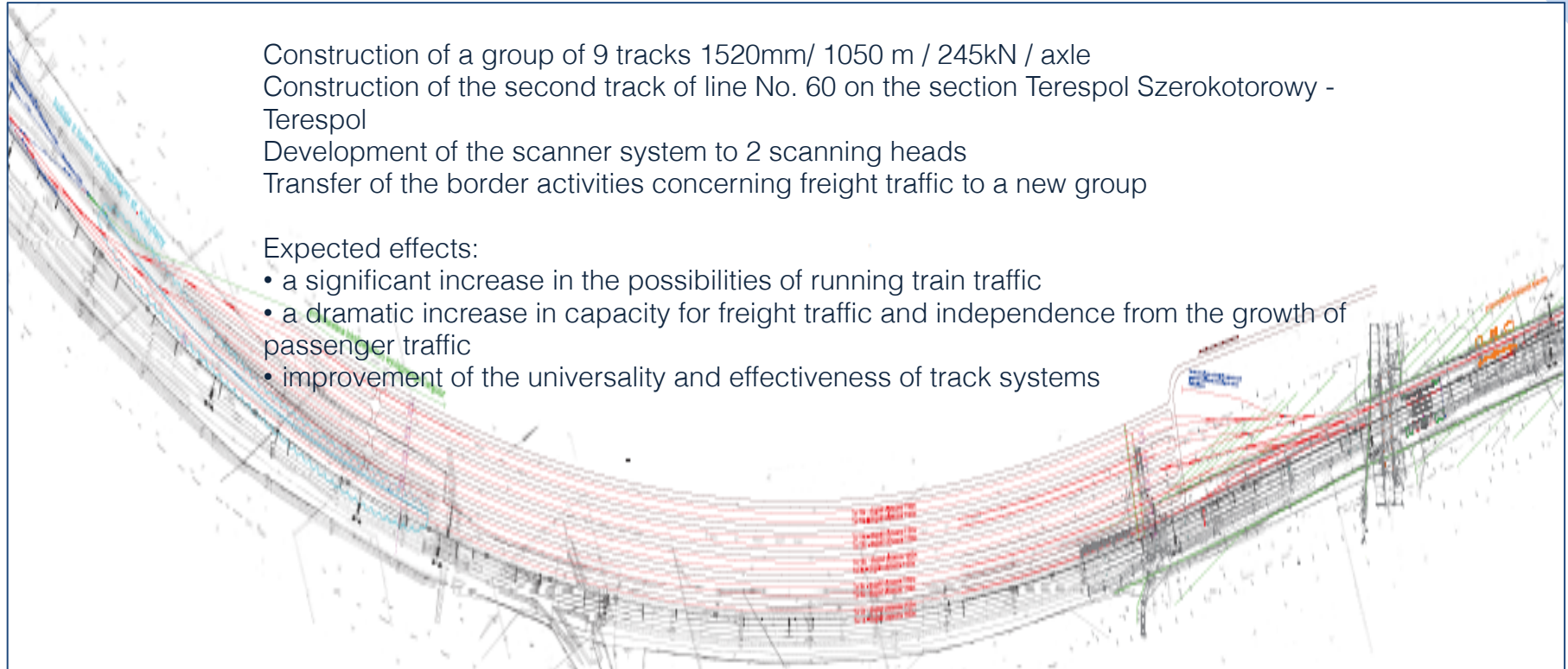
Construction of the new border bridge 2019 - 2025 / 140 m PLN

Station Terespol Szerokotorowy

Construction of a group of 9 tracks 1520mm/ 1050 m / 245kN / axle
Construction of the second track of line No. 60 on the section Terespol Szerokotorowy - Terespol
Development of the scanner system to 2 scanning heads
Transfer of the border activities concerning freight traffic to a new group

Expected effects:

- a significant increase in the possibilities of running train traffic
- a dramatic increase in capacity for freight traffic and independence from the growth of passenger traffic
- improvement of the universality and effectiveness of track systems

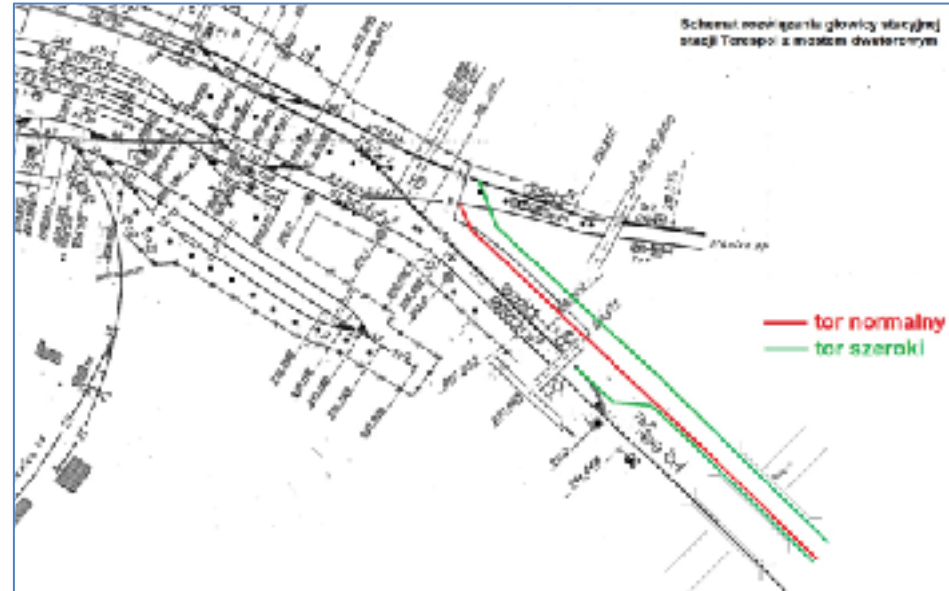


The new bridge

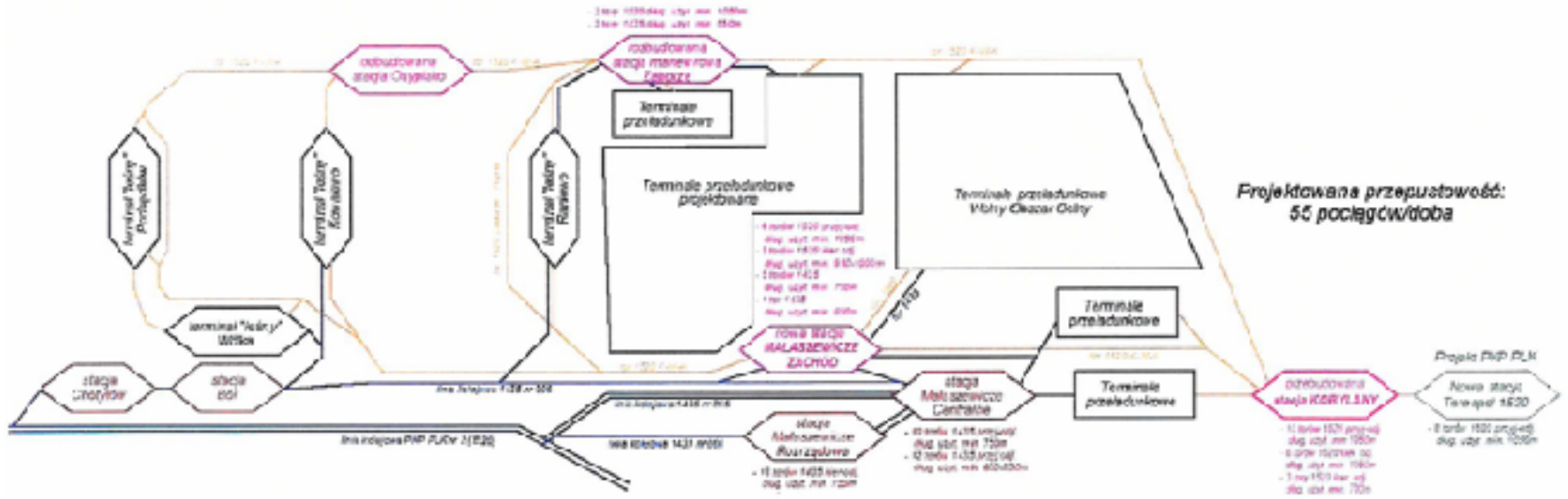
Construction of a new 2-track bridge on Bug river between Terespol and Brest Central stations, on the new bridge gauntlet tracks 1435/1520 mm (with electric traction) and independent 1520mm track, modified connection with the track system of the Terespol station

Expected effects:

- significant increase in the possibilities of conducting border checks
- possibility of mitigating the effects of problems with accepting trains
- separation of passenger and freight traffic
- doubling the capacity of the scanning device
- ensuring the possibility of simultaneous rides on the 1435 and 1520 systems



Małaszewicze Complex



Implementation of modernization plan will enable to achieve capacity of up to 55 pairs of trains per day on tracks of 1520 mm and on tracks of 1435 mm

State of play



Id	Nazwa zadania	Czas trwania	Rozpoczęcie	Zakończenie	Poprzedni	Zakończenie rzeczywiste	17													
							2018				2019				2020					
							Kw 3	Kw 4	Kw 1	Kw 2	Kw 3	Kw 4	Kw 1	Kw 2	Kw 3	Kw 4	Kw 1	Kw 2	Kw 3	Kw 4
1	Feasibility Study and Construction Design	1020 dn	pon, 09.10.17	pią, 24.07.20		Brak	54%													
2	Signing a contract	0 dn	pon, 09.10.17	pon, 09.10.17		Brak														
3	Stage I: Socio-economic analyzes and analyzes of the transport services market	130,33 odn	pon, 09.10.17	pią, 10.02.18 2		pią, 10.02.18	100%													
4	Stage II: Analysis of the condition of the existing infrastructure	137 odn	pią, 16.02.18	wto, 03.07.18 3		wto, 03.07.18	100%													
5	Stage III: Identification and analysis of project implementation options	300 odn	wto, 03.07.18	pon, 29.04.19 4		Brak	95%													
6	Stage IV: Report on environmental impact	60 odn	pon, 26.04.19	czw, 18.07.19 6		Brak	0%													
7	Stage V: Selection of the variant to be implemented	40 odn	czw, 18.07.19	wto, 27.08.19 6		Brak	0%													
8	Stage VI: Implementation of the construction design with arrangements	225 odn	wto, 27.08.19	śro, 03.04.20 7		Brak	0%													
9	Stage VII: Documentation for further stages of the project implementation	40 odn	śro, 08.04.20	pon, 18.05.20 8		Brak	0%													
10	The risk of obtaining administrative decisions	67 odn	pon, 18.05.20	pią, 24.07.20 9		Brak	0%													
11	Submission of an application for a construction permit	0 dn	pią, 24.07.20	pią, 24.07.20 102R+1 dzień		Brak	24.07													

DATES TO REMEMBER:

2020 JULY-END BUILDING PERMIT APPLICATION

2022 JANUARY-END PROJECT TO GO

2027/8 JANUARY-END PROJECT TO COMPLETE

OVERALL ESTIMATED COSTS:

500 MLN €

RAILWAY TRAFFIC CONTROL SHALL STAND 40 % OF THE AMOUNT

5 % MIGHT FUND ROADS WITHIN LPM



State of play

"Works on the E20 railway line on the section Siedlce - Terespol, stage III LCS Terespol"

The contract for construction works was signed on August 16, 2017, the total value of the project € 131 858 277.

The works cover three stations in the scope of comprehensive modernization [tracks, catenary, teletechnics, power networks, ccs]: Biała Podlaska, Małaszewicze and Terespol stations.

On the routes between the Biała Podlaska station and Terespol, works related to ccs, teletechnics and their power supply are carried out. A new control room is created at the Chotyłów station.

On December 20, 2012 a procedure was announced for "Execution of project documentation for the investment task entitled: "Improving the accessibility of the Terespol-Brest border crossing, Stage 1 - Expansion of the track layout with clearance of 1520 mm Terespol station ". The opening of offers in the proceedings took place on Feb. 07, 2019. Preparation of documentation financed from the Company's own resources.

In the coming days, it is planned to sign a contract with Schuessler-Plan Inżynierzy Sp. z o.o. Value of the contract PLN 2,587,000.00 (net)

Construction works will be financed in the next EU perspective and are planned for 2022 - 2024.

Thank you very much