

# Introduction

INVESTOR PRESENTATION

 **ZALAEGRSZEG**  
FIND YOUR FUTURE



# Location of Zalaegerszeg



# Regional road connections and conceptions



# Local airport availability



## Hévíz-Balaton Int. Airport

- Only 30km to Zalaegerszeg
- IATA: SOB
- ICAO: LHSM
- RWY: 2500x60m
- B747/Airbus 330 capable
- ILS | PAPI | ATC

ALAEGERSZEG

FIND YOUR FUTURE

# Feasible air cargo reach



## Cargo Hubs served by

- **Skyteam:** Budapest and Vienna – fast handling
- **One World:** Budapest (Qatar Cargo hub)
- **Star Alliance:** Budapest and Vienna
- **Charters:** Hévíz-Balaton AP
- **Business aviation:** Hévíz-Balaton AP

# Zalaegerszeg. The logistic WILL.

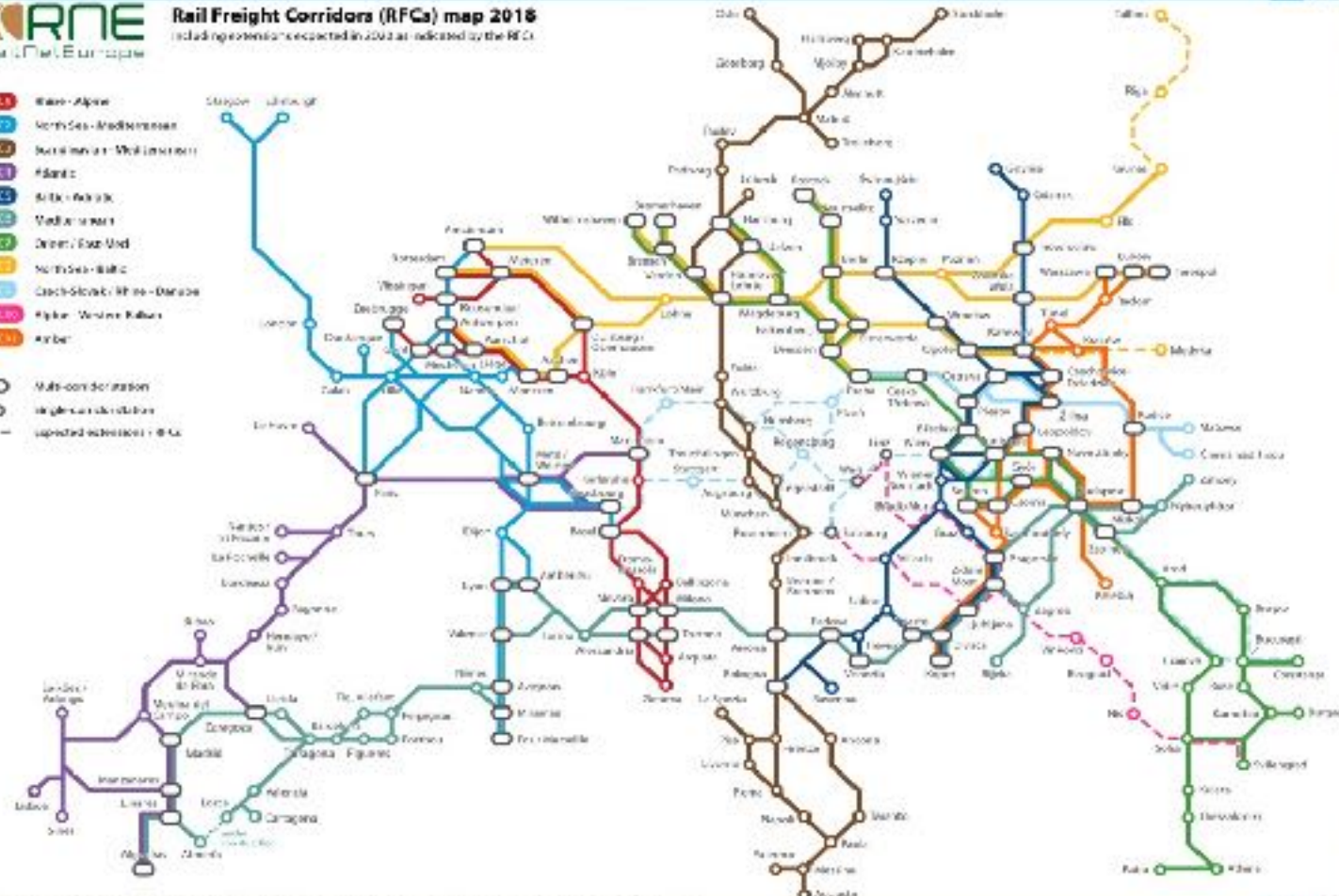




**Rail Freight Corridors (RFCs) map 2016**  
 (including extensions expected in 2020 as indicated by the RFC)

- RALP Euro-Alpine
- RFLP North Sea - Mediterranean
- RSLP Scandinavia - Mediterranean
- RPLP Atlantic
- RFLC Baltic - Adriatic
- RFLC Mediterranean
- RFLC Green / East Med
- RFLC North Sea - Baltic
- RFLC Czech-Slovak / Rhine-Danube
- RFLC Alpine - Western Balkans
- RFLC Amber

- Multi-commodities
- Single-commodity lines
- - - expected extension - 2020

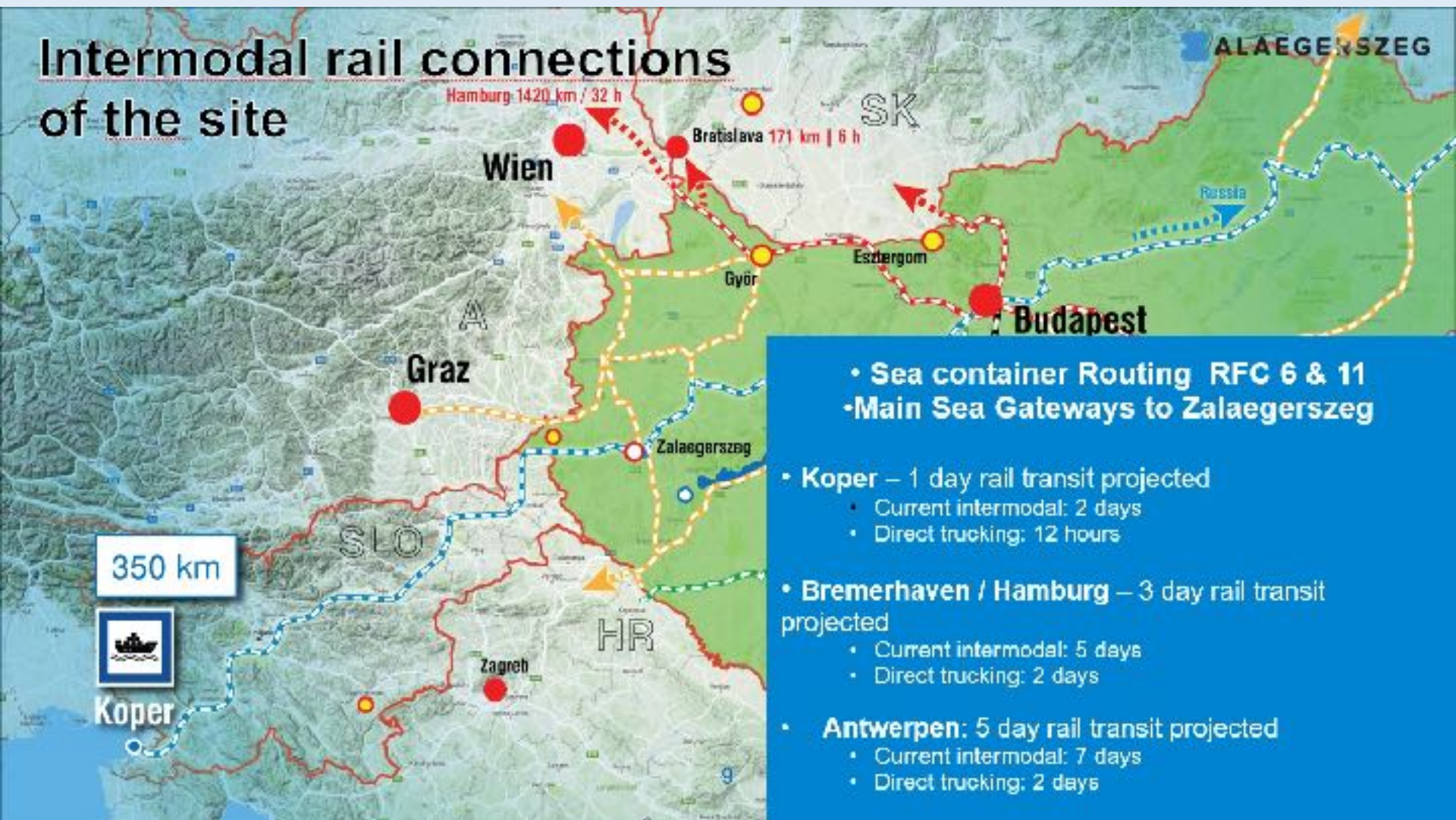


Any use without credit in any of the map or electronic or print publications is prohibited. All the rights reserved. © RNE, in the entire and total of the copyright.





# Intermodal rail connections of the site



- **Sea container Routing RFC 6 & 11**
- **Main Sea Gateways to Zalaegerszeg**

- **Koper** – 1 day rail transit projected

- Current intermodal: 2 days
- Direct trucking: 12 hours

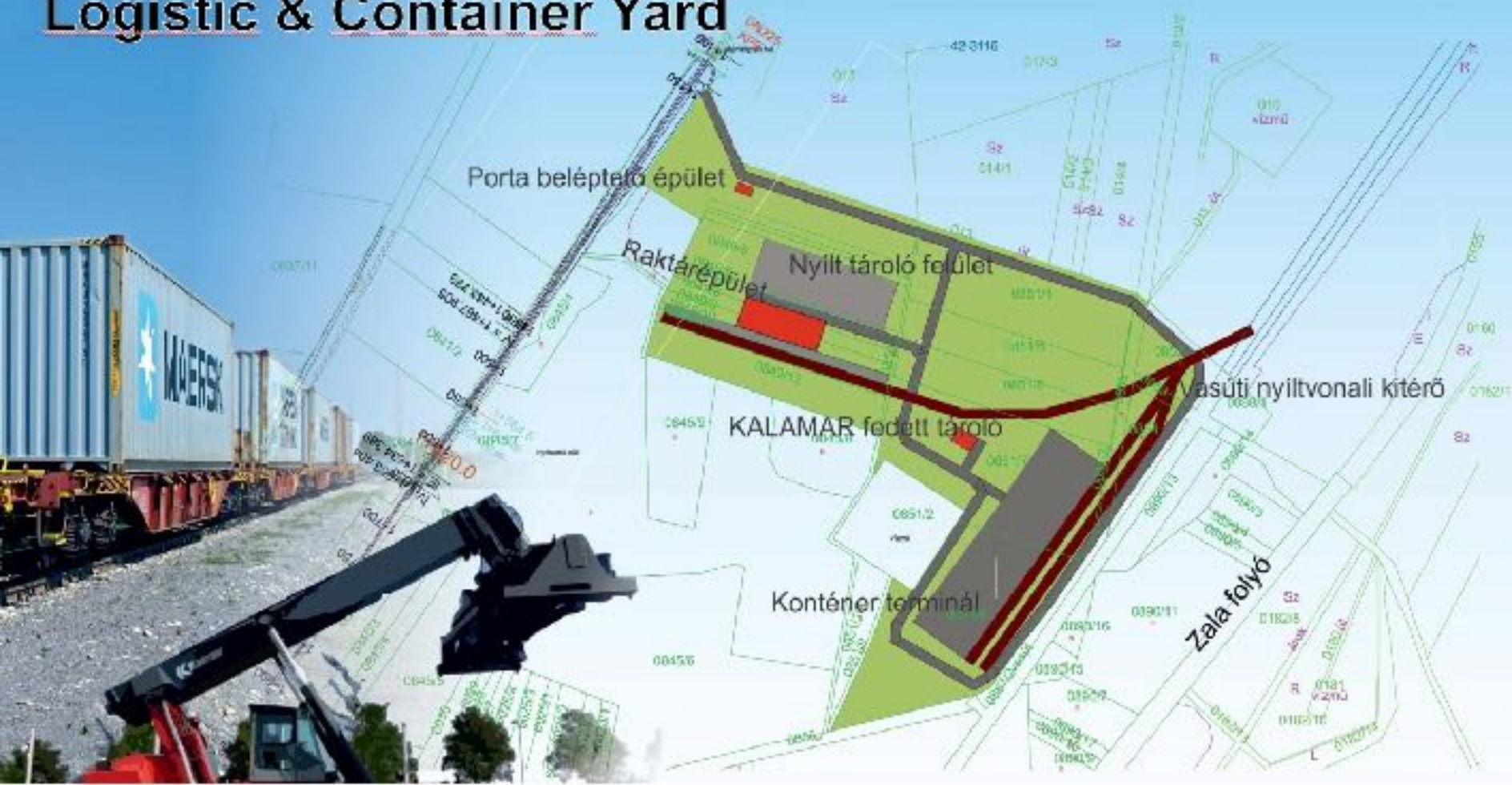
- **Bremerhaven / Hamburg** – 3 day rail transit projected

- Current intermodal: 5 days
- Direct trucking: 2 days

- **Antwerpen:** 5 day rail transit projected

- Current intermodal: 7 days
- Direct trucking: 2 days

# Logistic & Container Yard



# Logistic & Container Yard

- Public intermodal site with container terminal
- Warehouse complex
- Big box, class A warehouse with rack system on STS rent for LSP-s
- Vendor managed inventory
- ICT: IEEE SA 2048.5 VR industry standard for later
- Customs licensed areas
- AEO-F targeted
- TAPA security system planned

# Grounds for value added logistics

- **Proximity JiT strategy**
  - Gate / Line delivery minute (!) scheduling
  - Proxy for distance JiT suppliers
- **JiS capability**
  - Flow cross dock / flow sequencing for kan-ban to feed p-JiT
- **Industrial floor and utilities for pre-assemblies**
  - Assembly activity on small scale is possible by LSP on site
- **Supportive environment for leader LSPs**
  - Zalaegerszeg is up to GMP/GDP deployment and STS for LSP to support that activity

# Grounds for value added logistics 2

- ZEG-LogEcoS
  - -Logistic EcoSystem
  - - Fundamentals for modernity
  - - Flow of materials and informations
- Outer logistics
  - Highway, Airport, Dryport, Whs
  - Global 'plug' where any can connect
- Indoor logistics
  - Value creation – Vendor in
  - Lean via continous development
  - JiT feed / JiS preset
- Manufacturing logistics
  - Activities in cooperation with partners, science, vendors



THANK YOU FOR YOUR ATTENTION